

# Uprise Health Monitoring: Meet Our Staff

## Health Professionals' Services Program



**Kate Manelis, LMSW**  
**Program Manager**  
**Health Professionals' Services Program**

Kate has been with Uprise Health Monitoring since the Health Professionals' Services Program began in 2010. Prior to that, she worked at Uprise Health on the Employee Assistance Program team, and spent the first several years of her career as a Psychiatric Social Worker at Atascadero State Hospital in California. She obtained her BA in Social Work from Goshen College in Goshen, Indiana, and her Master of Social Work degree from Fresno State University. Outside of work, she volunteers as a Site Coordinator for SMART Reading and is the Treasurer of the Parent Support Organization for her children's middle school. She loves spending time with her family (which includes her spouse, two kids, two dogs, and two pet mice), reading, the Oregon coast, and anything true crime related.



**Jenn Leddin, LMSW, CADC II**  
**Lead Agreement Monitor**  
**Health Professionals' Services Program**

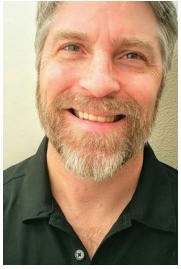
Jenn Leddin joined Uprise Health Monitoring as an Agreement Monitor for the Health Professionals' Services Program (HPSP) in October 2018. Prior to joining Uprise Health, she worked as a mental health therapist and alcohol & drug counselor in both residential and outpatient treatment centers for individuals and families. Jenn graduated from Portland State University with her Master of Social Work degree and became a licensed Social Worker in the state of Oregon. She is also certified as an Alcohol & Drug Counselor II through the Mental Health and Addiction Certification Board of Oregon. In her spare time, she enjoys playing softball and spending time with her family.



**Ashlea Tenner, MA, LPC, CADC-I**  
**Senior Agreement Monitor**  
**Health Professionals' Services Program**

Ashlea has been with Uprise Health Monitoring since January 2018 and is a Senior Agreement Monitor for the Health Professionals' Services Program (HPSP). Ashlea has a master's degree in mental health and addictions counseling from Lewis and Clark. Prior to joining Uprise Health, Ashlea was a dual diagnosis therapist at an acute adolescent residential treatment center. She also has prior experience treating healthcare professionals and co-running an LGBTQIA2S+ support group at Hazelden Springbrook. Outside of work, Ashlea enjoys spending time outdoors with her family and creating art through watercolor, food, and nature crafting.

# Health Professionals' Services Program



**Jim Dostert, QMHP, CADC-I**  
**Agreement Monitor**  
**Health Professionals' Services Program**

Jim Dostert joined Uprise Health in December of 2021 as an Agreement Monitor for the Health Professionals' Services Program (HPSP). Prior to joining the monitoring team, Jim gained valuable experience as a PSRB and SPMI clinician. During that time, Jim worked with individuals experiencing mental health and/or substance use disorders which allowed him to grow his skill-set to support those dealing with co-occurring disorders. He currently holds a Master of Science in addictions from Grand Canyon University and QMHP, CADC-I certification. Jim enjoys spending his free time with his family, working on cars, and looking for new things to experience in life.



**Kathryn (Kat) Peil, BS**  
**Agreement Monitor**  
**Health Professionals' Services Program**

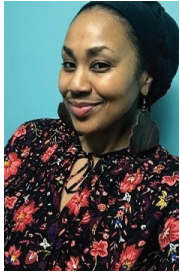
Kat Peil joined Uprise Health Monitoring in April of 2021 as an Agreement Monitor for the Health Professionals' Services Program (HPSP). Prior to joining the monitoring team, Kat gained valuable experience as a mental health crisis clinician and case manager in southwestern Washington. During that time, Kat worked with individuals experiencing mental health and/or substance use disorders which has allowed her a greater understanding of recovery. She currently holds a Bachelor of Science degree in Psychology from Washington State University and certification in case management. Kat enjoys spending her free time with her family, gardening, cooking, and hiking.



**BreAnne Butler-Smith, BA**  
**Agreement Monitor**  
**Health Professionals' Services Program**

In March of 2021, BreAnne Butler-Smith joined Uprise Health Monitoring as an Agreement Monitor for the Health Professionals Services Program (HPSP). Prior to joining the monitoring team, BreAnne worked as a mental health case manager for youth in Northern California. During BreAnne's time as a mental health case manager, she gained invaluable experience learning about the struggles with co-occurring disorders and the long term effects of trauma within family systems and youth. She is currently earning her Master's in Social Work and already holds a Bachelor's in Social Work. BreAnne enjoys spending time with her family and getting outside whenever possible.

# Uprise Health Monitoring



**Christa Lee, LMSW, SAP  
Program Manager  
Uprise Health Monitoring**

Christa Lee is the Program Manager for Uprise Health Monitoring Programs, including the Delaware State Professionals' Health Monitoring Program (DPHMP) and the Christiana Care Monitoring Program (CCMP.) In this role Christa consults with state boards and employers, partnering with them to protect public safety and foster continued recovery for health professionals and other employees through supportive monitoring. Christa was hired by Uprise Health in 2010 as the Team Lead for the Health Professionals' Services Program for the State of Oregon. She assisted in implementing & rolling out the statewide monitoring programs for healthcare professionals in both Oregon and Delaware and has served in the capacity of an Agreement Monitor since that time.

Christa graduated with her Master's in Social Work degree from the University of Maryland, School of Social Work in 2008, specializing in Mental Health & Substance Abuse with a sub-specialization in Employee Assistance Programs. After graduating, she was hired by First Advantage, Inc. as the Program Manager for their SAP Services program. As the Program Manager, she was responsible for managing the chemical dependency programs for a host of companies & organizations whose employees had tested positive in the workplace. Christa, who is also a credentialed SAP (Substance Abuse Professional under the Department of Transportation), is a strong advocate for overall health and wellness and is a certified spinning and fitness instructor. She enjoys working out, traveling, and spending time with her family.

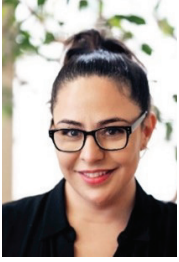


**Dylan H.  
Agreement Monitor  
Uprise Health Monitoring**

For more than eight years, Dylan H. has filled a variety of roles at Uprise Health providing much needed assistance. Since 2019, he has served as an Agreement Monitor for the Delaware Professionals' Health Monitoring Program (DPHMP). He also serves as the enrollment coordinator for DPHMP, Christiana Care Monitoring and other Uprise Health Monitoring programs. It is his goal to help each participant successfully navigate the enrollment process. Dylan also manages the Extended Monitoring Program, a monitoring program for those looking to document their ongoing recovery work for both accountability and personal growth purposes.

Previously Dylan worked with the Health Professionals' Services Program (HPSP) as the Enrollment coordinator, building on his experience as an Administrative Case Coordinator in the operations side of the department. In 2013, Dylan joined Uprise Health working in the employee assistance program.

# Operations Team



**Tina Mewhinney**  
**Monitoring Operations Manager**  
**Uprise Health Monitoring**

Tina Mewhinney is the Operations Manager for Uprise Health Monitoring. In this role, she manages vendor relations, is the liaison with finance, and manages the Operations Team, ensuring seamless delivery of service.

Tina's expertise is based on her years of experience working within Uprise Health Monitoring. She joined Uprise Health in July of 2012 as an Administrative Case Coordinator. She served as a liaison with Uprise Health's toxicology vendors, coordinated toxicology sites for participants and became an expert in monitoring operations. In 2019, she became the team lead for operations and served as the Program Manager for several programs, including Combined Transport, Oregon State Lawyers Association, Montana and Adolescent Intervention Management. In January of 2020 Tina took on the dual roles of Operations Manager and Portland Office Manager. In her spare time, she enjoys spending time in nature, time with her family, cooking and photography.



**Mark Stotts**  
**Monitoring Assistant**  
**Operations Team**

Since 2014, Mark has been an integral part of monitoring department operations. His primary focus is toxicology, from account set-up to testing processes. Mark assists with other operations duties such as data entry as well. Mark received his Bachelors of Science with a major in Psychology from Portland State University in 2013. Outside of work hours, Mark can be found running, competing in obstacle course races, hiking and practicing archery.



**Kristine Herrington**  
**Assistant Case Coordinator**  
**Operations Team**

Kristine joined the Uprise Health Monitoring team in May of 2018. Kristine is primarily responsible for participant financials. Kristine also supports the Monitoring team with a multitude of administrative tasks and special projects. Kristine holds an Associate's Degree as an Administrative Assistant from Lewis-Clark state college in Idaho. Previously Kristine worked in a non-profit drug treatment center. In her spare time, Kristine likes spending time with her grandchildren and being outdoors.



**Ali Kelly**  
**Administrative Assistant**  
**Operations Team**

In November 2019, Ali Kelly started with Uprise Health and worked with several departments prior to finding her home with the Monitoring Department in April of 2020. As the department's administrative assistant, Ali verifies testing, processes invoices, manages mail processes along with other projects. Ali loves reading, writing, music, art, crafting, and hiking with her family.

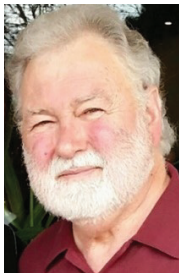
## Administrative Team



**Lori Govar, MSW, MBA**  
**Director, Uprise Health Monitoring**

As the Director of Uprise Health Monitoring, Ms. Govar oversees program management, sales, and data management. She brings a wealth of experience to this role. Previously, she was the Report & Data Manager for Uprise Health Monitoring.

Ms. Govar's expertise is grounded in her experience in direct client service in the EAP field, previously providing telephonic intakes, case management, high risk case consultation and compliance monitoring. Her subsequent experiences as a Senior National Account Manager included program implementation, program analysis, management consultation, organizational development and educational seminar development and provision. Later, Ms. Govar held the role of Operations Officer at First Advantage Workplace Services, overseeing account management, network management, and operations, including information systems development and maintenance, systems analysis, quality improvement, financial analysis, CEAP supervision and staffing. In her role as Report & Data Manager for Uprise Health Monitoring, Ms. Govar managed the development of the monitoring information system, including working with the direct service team to identify needs; planning and implementing small projects; and partnering with full time programmers for large projects. Ms. Govar queried the system for relevant data, analyzed the findings and prepared succinct, clear reports. Additionally, she implemented surveys and delivered reports analyzing findings and developed pricing for program services.



**Dr. Joseph H. Autry, III, MD**  
**Psychiatric Consultant**

Dr. Autry is a Board Certified psychiatrist and a former member of the Federal Senior Executive Service. For more than 25 years, Dr. Autry held key leadership positions in mental health and substance use research, policy and administration and has maintained a private psychiatric practice. He retired from federal service in April 2009, and received commendations from the Secretary of Health and Human Services (HHS) and the Secretary of the Department of Veterans Affairs (VA).

While serving in the Federal Senior Executive Service, Dr. Autry was responsible for the implementation of Executive Order 12564, which requires federal agencies to establish comprehensive drug-free workplace plans. He also oversaw the management of the National Laboratory Certification Program, the implementation of the Mandatory Guidelines for Federal Workplace Drug Testing Programs and development of the system of training for laboratory inspectors and Medical Review Officers. He has also served as the Deputy Administrator for the Substance Abuse and Mental Health Services Administration and from 2001-2002 he served as the acting Administrator of the agency.

A recipient of both the Presidential Rank Award for Meritorious service and the Presidential Rank Award for Distinguished Service, Dr. Autry is also a Distinguished Life Fellow of the American Psychiatric Association.

# Administrative Team



**Dr. Robbie Bahl, MD**  
**Medical Director**

Dr. Bahl is a triple Board-Certified medical physician, specializing in Addiction Medicine and Family Medicine. Dr. Bahl subspecializes in the monitoring of impaired professionals, and is the Medical Director of the State of Oregon's Health Professionals' Services Program (HPSP).

Dr. Bahl is also a board-certified Medical Review Officer (MRO). He is the Medical Director of Shanti Recovery & Wellness in Portland, Oregon, where he performs Suboxone and Buprenorphine Inductions and Maintenance, Chronic Pain Management, Chronic Opioid Management, Alcohol Dependence Treatment, Vivitrol and Sublocade Injections, and psychotherapy. Dr. Bahl also holds privileges at several hospitals in the Portland metro area where he performs inpatient detoxification and rehabilitation.

Dr. Bahl has been formally trained in Addiction Medicine in the university setting. He completed an accredited ABAM fellowship training program at The Addiction Institute of New York in Manhattan at the Columbia University College of Physicians and Surgeons. In addition, he has worked on the national level by sitting on the Board of Directors of ASAM, the American Society of Addiction Medicine.

"I strive to change society's outlook on drug addiction. Addiction is a chronic neurobiological illness and should be treated as one by medical professionals, governments, and the public. The medical, social, and financial tolls of the disease on public health are astronomical. With education and quality treatment, addiction medicine will gain further recognition as a major medical specialty."